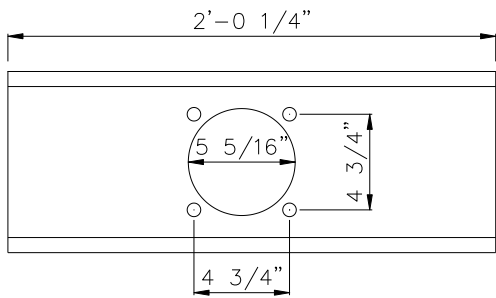


80110060YEL
6' ROTARY CUTTER



6' FRONT A ARM BRACE
 80634070YEL

SWIVEL HITCH
 80412770YEL

A-FRAME 3 1/2"
 BUSHING-80634080YEL

A FRAME ARM
 LH & RH-80633890YEL

CAT 1 LIFT ARM PIN
 7/8"-3018352

6' STUMP JUMPER
 40HP 12 SPLINE
 2088026

6' BLADES-3018435

BLADE BOLT-1308012

BLADE BOLT NUT
 1308015

BLADE BOLT
 LOCK WASHER-1308016

PTO SHAFT 47"-1728012

40HP GEAR BOX
 1:1.47 RATIO-2088028

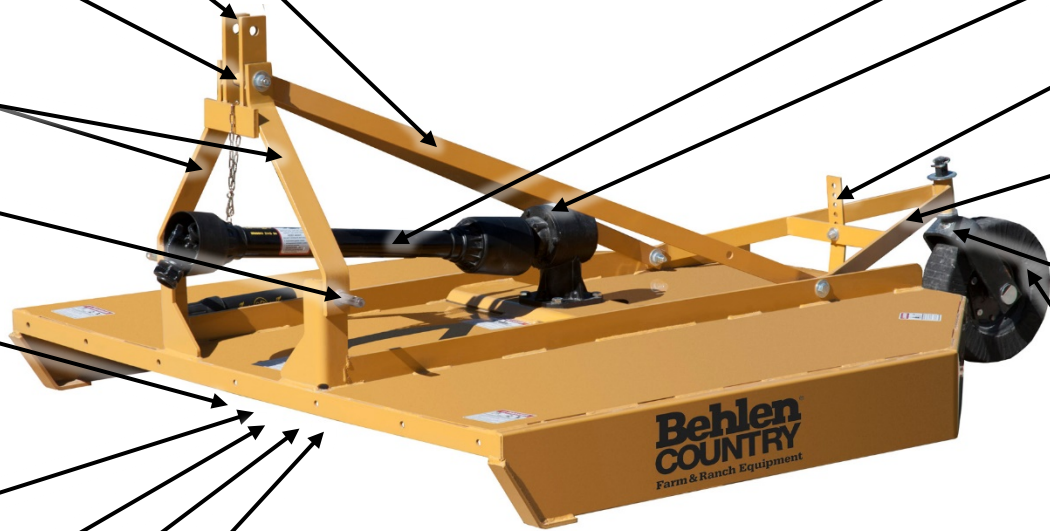
TAIL WHEEL ADJ. STRAP
 80628130YEL

REAR A ARM
 80412780YEL

TAIL WHEEL FORK
 80412235

TAIL WHEEL ONLY
 3988029

TAIL WHEEL
 ASSEMBLY
 3988031



NOTES:

BLADE NUT TORQUE 600FT LBS
 APPROXIMATE LUBE CAPACITY 1 QT
 FILL WITH 80w 90 GEAR OIL
 PULL OUT SMALL AND LARGE PLUG FILL THRU TOP PLUG UNTIL OIL
 SEEPS OUT OF SMALL PLUG.
 REPLACE PLUGS
 SNAP RING ON INPUT SHAFT TO GEAR BOX IS TO KEEP PTO SHAFT FROM
 FALLING OFF WHEN SHEAR BOLT BREAKS.
 INPUT SHAFT IS A 1-3/8" SMOOTH DIAMETER WITH A 1/2" SHEAR BOLT
 SHEAR BOLT MUST BE GRADE 2 - 1/2" X 3.5 INCH DIAMETER BOLT
 5HP PER 1 PER FOOT OF IMPLEMENT IS RECOMMENDED FOR
 OPERATION. IE 6' CUTTER=30HP